

Your Worship, Mayor Krantz, Members of Council and Staff:

I am here representing a group of parents living in the Coates neighbourhood – SW of Derry & Thompson. We want to ensure a prime interest of ours is not forgotten in the setting of aims, goals and levels in the 2011 Budget process.

That interest is the safety of our families, especially our children, as we work to build our community.

We have heard a great deal about “Traffic Calming” procedures but have seen very little effort to have any measures implemented.

Coates Neighbourhood Park, with potential safe routes to Our Lady of Fatima & TJ Singh Elementary Schools, is only partially complete and we have seen very little work has been done to complete it. We are also not aware of plans for keeping the paths open year round as safe walk-ways for students of these schools.

You have designed our community with our schools and parks on an island surrounded by a moat of access roads – Yates, Bolingbroke and Philbrook.

You may wonder how this presentation fits into what you refer to as the “Budget Call Report”.

As staff works on preparing the annual budget – labelled “the strategic planning document whereby the financial resources of the municipality are allocated to various public services and project” in CORS-068\_09, we suggest that in these projects you include **Traffic Calming** near parks and schools and in public services you include maintaining **safe walking routes** to schools.

### 1. Traffic Calming

Yates and Philbrook are two roads which are wide, smooth and clear – a recipe for speed for many drivers.

So far traffic enforcement seems to be a finger pointing exercise. The Town says “It’s the Police who are responsible for eliminating speeds”. The Police answer “We cannot be everywhere and we did not design the roads.”

Bicycle lanes have been suggested, but they are not recommended for traffic calming unless cars and bikes can be separated by more than painted lines on the street. Young, inexperienced riders are no match for cars.

We are suggesting that Philbrook, on the portion of the road between Coates Neighbourhood Park and the New Life Church property on the east side, would be an ideal area to place a series of “Chicane” features to narrow the street

width. This will force cars to drive through a narrower space, resulting in slower speeds and automatically creating a safer environment around the park and schools.

Attached is a map we have constructed showing where we feel the most effective chicanes would be.

In our proposal, we leave a consistent width to the street of about 31 feet, sufficient for clear movement of traffic, including transit busses and deployment of fire vehicles.

We are suggesting “No Stopping/Parking” in this area as it is not required – the parking lots in the north and south portion of the park, as well as the 2 school parking lots, provide ample parking to support use of the soccer fields.

We have looked at the Traffic Warrant studies done for the streets entering onto Philbrook and Bolingbroke and agree that they are not good candidates for 4-way stops and have heard the Town’s position regarding stop signs not being used for speed control. Again, we agree with this in principal, but are left frustrated because the Town has not answered the obvious question of “What, then, CAN we use for speed control?” As well, these are vehicle traffic studies and have not taken into account the increase in pedestrian traffic that the immense growth planned for both Our Lady of Fatima and TJ Singh schools this fall.

Total enrolment at both schools this year will be in excess of 1550 students of which more than 82% - almost 1300 children – will be in grade 5 and under. The majority of these children will be coming from the surrounding area without the safety of a school bus. TJ Singh will be a “walk to only” school, and OLF has only 1 or 2 busses transporting children from the escarpment neighbourhood.

## 2. Safe Routes to School

Programs such as “Active & Safe Routes to School” are being organized in our communities by a steering committee comprised of representatives from both school boards, individual communities, Halton Police force as well as municipal representatives (though when I checked the committee member list for 2009, only Oakville and Burlington were represented at the municipal level). Their initiatives, like the “Walking school Bus”, are most effective when the organizers and parents feel there are safe and easy walkways for their children to get to school.

The alternative is parents driving their kids to school, which adds to the congestion on the roads and adds needless pollution to our environment.

We understand Crossing guard studies are to be completed in the fall for a variety of sites in our community. May we suggest the process be started

immediately with the school boards and/or the Principals of these two schools providing the preliminary patterns of the locations of registered children? Waiting until the fall to start the studies will result in a skewed representation of the number of students using logical crossing locations due to parents who may be driving their children to school UNTIL crossing guards are in place. I've had conversations with parents at the park suggesting they will do just that.

In addition, critical to any safety program is the year round maintenance of safe walkways to schools. The layout of Coates Neighbourhood Park is somewhat unique in this town in that it contains trails that lead directly to both schools and provide logical walking paths from all park access points to the schools. We would like to ensure, within the budget process, that these pathways be ploughed and sanded along with sidewalks in areas outside of resident care.

We appreciate these requests have a cost value associated with them, however, some may be Capital related i.e. Traffic Calming, and therefore may be recovered from Development charges - meaning the effect on the overall operating costs may be minimal in the grand scheme of the budget.

It is difficult to put a price tag on safety – especially a child's. If you are not aware, there have already been 2 vehicles/ pedestrian accidents in areas similar to the one I am speaking to: on Yates, across from Burling Park and on Scott Blvd. near Escarpmentview Public School. It's time the Town of Milton address the **real** safety concerns in these areas and implement **real** traffic calming measures to make sure these situations don't get worse.

Thank you for your time and we look forward to working with Staff on making our neighbourhood safe.

Bernadette Mason  
Cousens Terrace  
Milton, ON

RESIDENTIAL

RESIDENTIAL

COATES  
NEIGHBOURHOOD  
PARK  
NORTH

565'

PARK PATH

PARK PATH

PARK PATH

PARK TRAFFIC  
ENTRANCE

GAS COMPANY  
ENTRANCE

PARK PATH

PARK PATH

COATES  
NEIGHBOURHOOD  
PARK  
SOUTH

889'

2" 2"

31'

1" DRAINAGE  
4' BOX  
ORNAMENTAL  
GRASSES

36'

36'

43'

1" DRAINAGE

2"

31'

52'

BOLNBROKE

CROSSING  
GUARD  
STUDY

RESIDENTIAL

RESIDENTIAL

RESIDENTIAL

COUSENS TERRACE

RESIDENTIAL

FUTURE TOWN TRAIL CONNECT

NEW LIFE CHURCH PROPERTY

0' F.H.  
546'

NEW LIFE CHURCH PROPERTY

5' BOX  
ORNAMENTAL  
GRASSES

NEW LIFE CHURCH PROPERTY

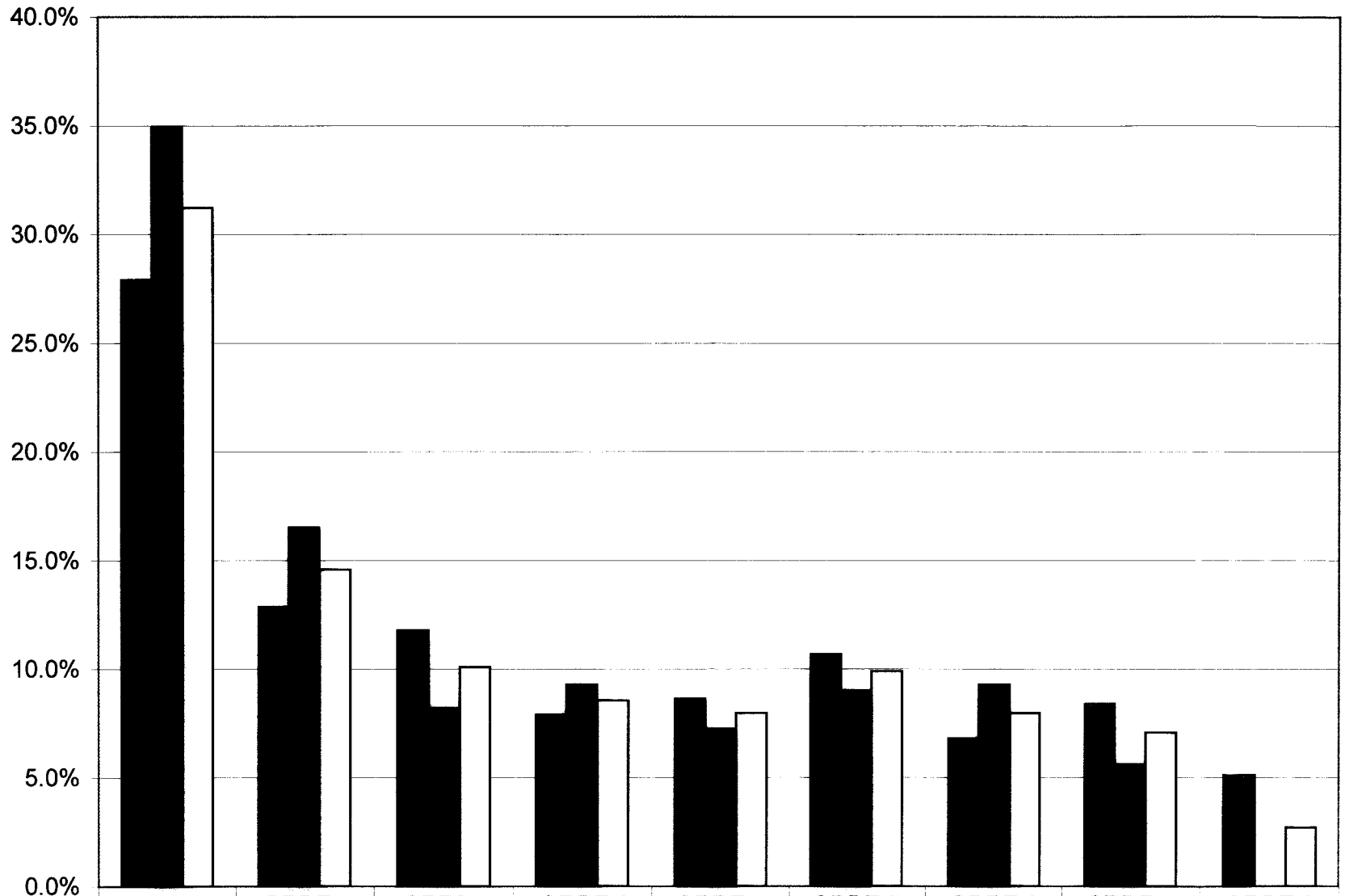
0' F.H.

3' CLARKE BOULEVARD

CROSSING  
GUARD  
STUDY

# SCHOOL ENROLMENT - SEPTEMBER, 2010

PERCENTAGE OF STUDENTS



■ OUR LADY OF FATIMA	27.9%	12.9%	11.8%	7.9%	8.6%	10.7%	6.8%	8.4%	5.1%
■ TIGER JEET SINGH	34.9%	16.5%	8.2%	9.3%	7.2%	9.0%	9.3%	5.6%	0.0%
□ TOTAL	31.2%	14.6%	10.1%	8.5%	8.0%	9.9%	8.0%	7.1%	2.7%

GRADES

## School Enrolment

T. J. Singh – September, 2010

Junior Kindergarten	122		16.6 %	
Senior Kindergarten	134		18.3 %	
Grade 1	91		12.4 %	
Grade 1 – French Immersion	30	<b>377</b>	4.1 %	<b>51.4 %</b>
Grade 2	60		8.2 %	
Grade 3	68	<b>505</b>	9.3 %	<b>68.9 %</b>
Grade 4	53		7.2 %	
Grade 5	66	<b>624</b>	9.0 %	<b>85.1 %</b>
Grade 6	68		9.3 %	
Grade 7	41		5.6 %	
Total	733			

School Principal Rick Nodwell

Halton District School Board 905-335-3663

## Our Lady of Fatima

Junior / Senior Kindergarten	230		27.9 %	
Grade 1	106	<b>336</b>	12.9 %	<b>40.8 %</b>
Grade 2	97		11.8 %	
Grade 3	65	<b>498</b>	7.9 %	<b>60.4 %</b>
Grade 4	71		8.6 %	
Grade 5	88	<b>657</b>	10.7 %	<b>79.7 %</b>
Grade 6	56		6.8 %	
Grade 7	69		8.4 %	
Grade 8	42		5.1 %	
Total	824			

School Principal Carol Caverley

School Phone Number – 905-864-0720

Will have 10 portables on site – September, 2010

Will have some buses from area west of Bronte

Will have French Immersion students in grade 5

Parents are reluctant have children walk with park in current condition – when complete??

Crossing Guards provide a sense of safety which makes it easier to promote programs such as The Walking School bus – otherwise will drive children.

Total – Both Schools

Junior / Senior Kindergarten	486		31.2 %	
Grade 1	227	<b>713</b>	14.6 %	<b>45.8 %</b>
Grade 2	157		10.1 %	
Grade 3	133	<b>1,003</b>	8.5 %	<b>64.4 %</b>
Grade 4	124		8.0 %	
Grade 5	154	<b>1,281</b>	9.9 %	<b>82.3 %</b>
Grade 6	124		8.0 %	
Grade 7	110		7.1 %	
Grade 8	42		2.7 %	
Total	<b>1,557</b>			